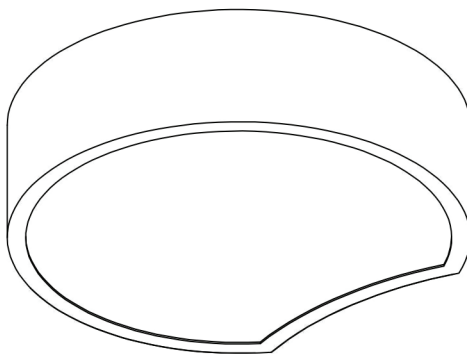




# Contemporary Lighting

PRODUCT NAME: Cells  
ITEM NUMBER: E20171

Please consult your electrician for hanging fixture and wiring.



The fixture is designed to dim with a standard Triac forward phase dimmer. Dimming levels will vary by dimmer.

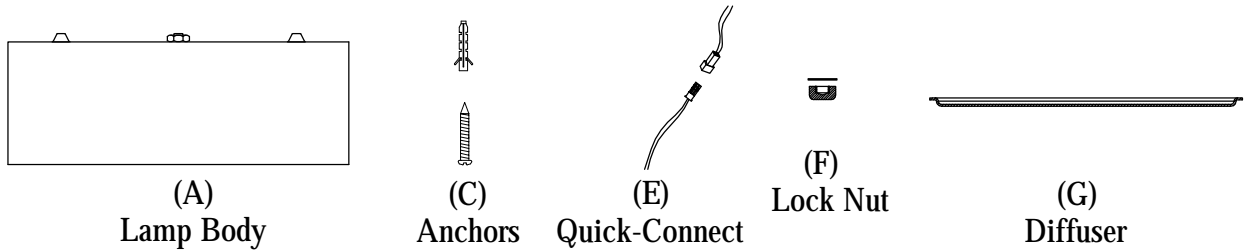
Below is a list of recommended dimmers:

- Lutron MACL-153M
- Lutron DVL-153P
- Lutron SCL-153P
- Leviton IPL06-10Z
- Leviton 6674-POW

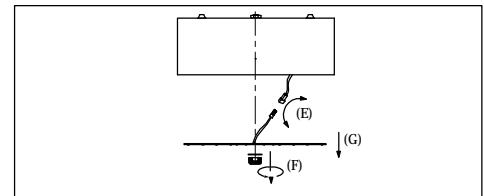
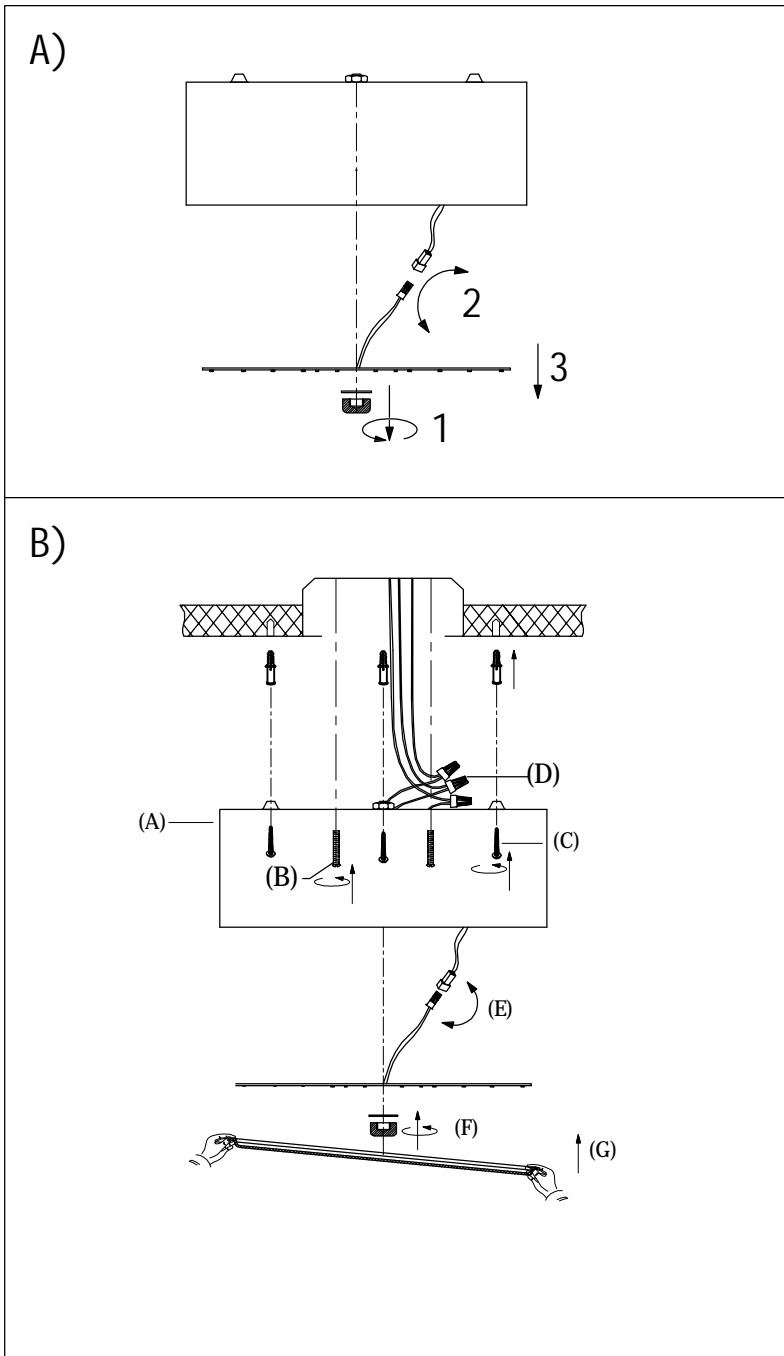
Due to inrush current wattage should not exceed 150 watts of product for a 600 watt dimmer.

Warning! This fixture is supplied with an installed LED driver. Wires **MUST** be connected to driver found in canopy and **NOT DIRECTLY TO POWER SOURCE** or a short might occur.

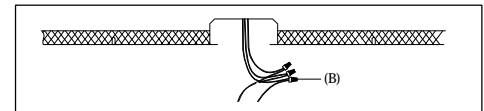
**IMPORTANT: Turn off the power at the main fuse or circuit breaker box before starting installation**



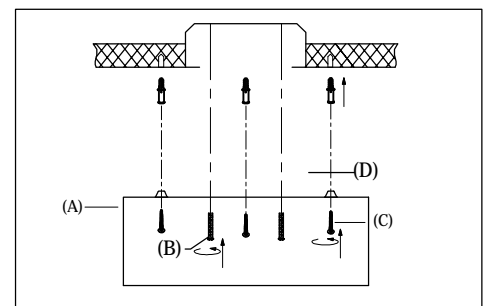
Locate all hardware & components before discarding packaging



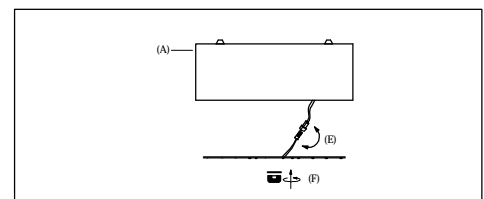
Step.1: Carefully unscrew the lock (F) from the fixture to release LED board. Unplug the board using quick connect (E) and remove it from lamp body (A).



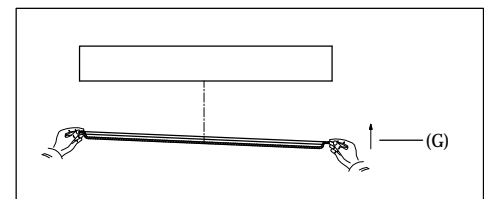
Step.2: Wire fixture to wires (B) in outlet box. Copper wire is for Ground.



Step.3: Secure lamp body to outlet box, and use additional anchors when needed.



Step.4: Reconnect LED board using Quick Connect (E) and fasten to Lamp Body (A) using Lock Nut (F).



Step.5: Attach acrylic diffuser (G) to fixture.

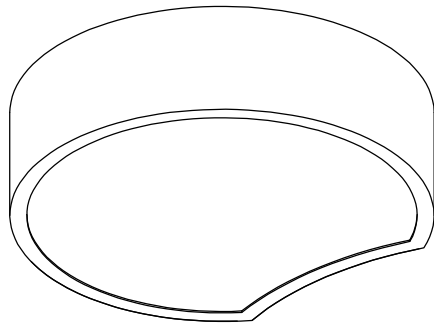
**Cleaning & Care:**

Clean with soft cloth and a mild detergent.  
Do not use abrasive cleaner.



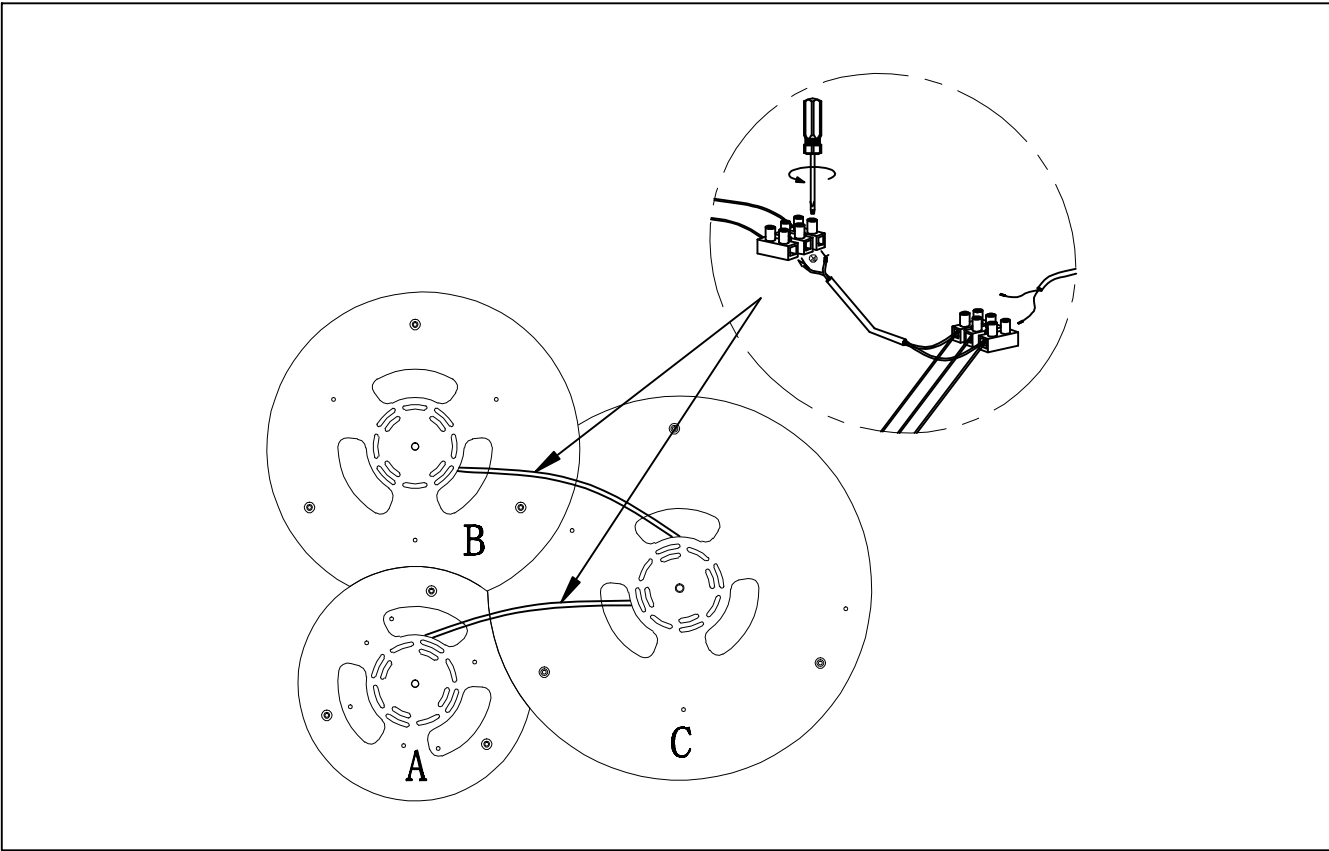
Contemporary  
Lighting

Model E20171-11MS  
Acrylic Diagram



A-1(W9.5" x H0.06")  
EACL20171-11

### Combination Connection Reference



Below are example configurations

