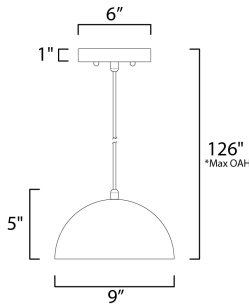


**PRODUCT DESCRIPTION**

Constructed of double thick aluminum which has a hammered interior finish polished so to not only be beautiful but multiply the lumen output. High polish enamel paints finish the exterior for the ultimate reflective surface. The larger sizes are fitted with commercial grade LED and multi-volt input drivers that dim with both ELV and 0-10V functions.



\*max overall height

**MEASUREMENTS**

DIMENSION : 9" L x 9" W x 5" H  
 MAX OAH : 126" OAH  
 CANOPY : 6" W x 1" H x 6" L  
 HANGING WEIGHT : 1.65 lb

**LAMPING**

INPUT VOLTAGE : 120V  
 LUMENS : 950 Rated (480 Del.)  
 BULB : 1 x 10W LED PCB Integrated , 10W Total  
 BULB INCLUDED : (Integrated)  
 DIMMABLE : ELV or Triac CL  
 CRI : 90 CRI  
 COLOR\_TEMP : 3000K

**FINISHES OPTION**

-  Gloss Black / Aluminum (GBAL)
-  Gloss Black / Gold (GBGLD)
-  Gloss Navy / Aluminum (GNAL)
-  Gloss Taupe / Aluminum (GTAL)
-  Gloss White / Aluminum (GVAL)

**MATERIAL**

Aluminum

**RATINGS**

cETLus  
 Dry Location



**ADDITIONAL**

SLOPE: 30  
 RATED LIFE 25000 Hours  
 OPERATING TEMPERATURE:  
 -20°C (-4°F), 40°C (104°F)

Always consult a qualified electrician before installing any lighting product.



WESTERN DISTRIBUTION CENTER (HEADQUARTER)  
 253 NORTH VINELAND AVE | CITY OF INDUSTRY, CA 91746  
 EASTERN DISTRIBUTION CENTER  
 101 GARDNER PARK | PEACHTREE CITY, GA 30269  
 P. 626.956.4200 | F. 626.956.4225 | maxlighting.com