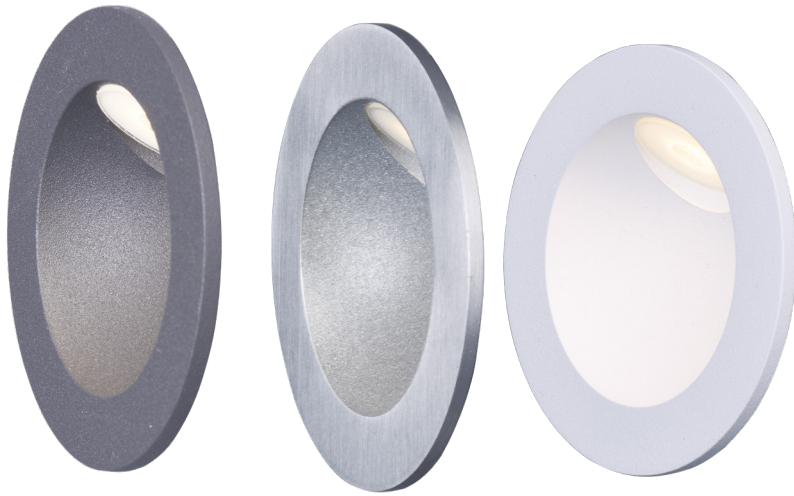


# ALUMILUX™ PATH LED | PATHWAY

## E41404 | E42404

- ETL, cETL
  - E42400 Rough in Box required for installation of this product.
- Must be installed with 12V Transformer

Job Name : \_\_\_\_\_  
 Job Type : \_\_\_\_\_  
 Quantity : \_\_\_\_\_  
 Comments : \_\_\_\_\_



### PRODUCT DESCRIPTION

Provide safe and functional lighting along your paths by adding spot lighting and bollards. These machined aluminum products enhance the architectural elements of your home by using techniques like grazing and uplighting. Whether you choose to accentuate an object of interest or extend your living space, this collection has the sleek and slim profile to blend seamlessly into your pathways.

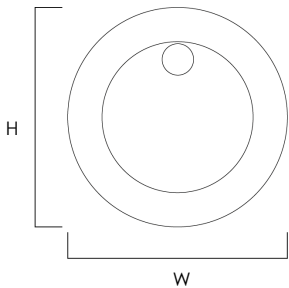
### MEASUREMENT

MODEL	DIMENSION	HCO	HANGING WEIGHT
E41404	3.25"W x 3.25"H x 1.5"EXT	3.00"	0.55 LB
E42404	3.25"W x 3.25"H x 1.5"EXT	-	0.44 LB

### LAMPING

### LAMPING

MODEL	BULB TYPE	CRI	LUMENS	COL TEMP.	DIMMABLE	INPUT
E41404	(1) 2W PCB LED (Integrated)	90+	180	3000K	NO	12V
E42404	(1) 2W PCB LED (Integrated)	80+	180	3000K	NO	120V



### FINISHES OPTIONS:

- Satin Aluminium (SA)
- Bronze (BZ)
- White (WT)



### MATERIAL:

Aluminium

### RATINGS:

ETL cETL IP65  
 Wet Location  
 ADA



### ADDITIONAL:

INSTALLATION: Down  
 LIGHTING DIRECTION: Down  
 OPERATING TEMP: -20° C (-4°), 40°C (104°F)  
 PHOTOMETRIC: Report Found Online  
 PCB LED Integrated

Always consult a qualified electrician before installing any lighting product



**WESTERN DISTRIBUTION CENTER (HEADQUARTERS)**  
 253 NORTH VINELAND AVE | CITY OF INDUSTRY, CA 91746

**EASTERN DISTRIBUTION CENTER**  
 4200 SHIRLEY DR. | ATLANTA, GA 30336

P. 626.956.4200 | F. 626.956.4225 | et2online.com