

ALUMILUX™ ROUGH IN BOX | PATHWAY

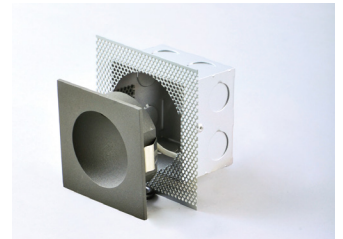
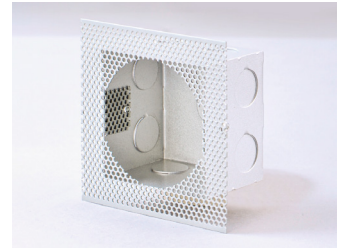
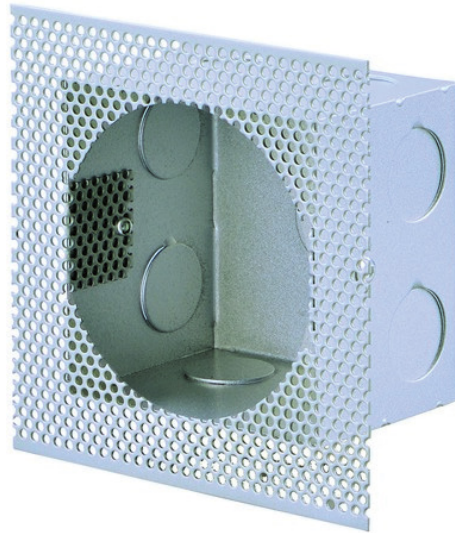
E42400

Job Name : _____

Job Type : _____

Quantity : _____

Comments : _____



PRODUCT DESCRIPTION

Provide safe and functional lighting along your paths by adding spot lighting and bollards. These machined aluminum products enhance the architectural elements of your home by using techniques like grazing and uplighting. Whether you choose to accentuate an object of interest or extend your living space, this collection has the sleek and slim profile to blend seamlessly into your pathways.

MEASUREMENT

DIMENSIONS : 4"L x 4"W x 2"EXT
HANGING WEIGHT : 0.44 Lb

RATINGS:
ETL cETL IP65



Always consult a qualified electrician before installing any lighting product

ADDITIONAL:
OPERATING TEMP: -20° C (-4°), 40° C (104° F)



Contemporary
Lighting™

WESTERN DISTRIBUTION CENTER (HEADQUARTERS)
253 NORTH VINELAND AVE | CITY OF INDUSTRY, CA 91746

EASTERN DISTRIBUTION CENTER
4200 SHIRLEY DR. | ATLANTA, GA 30336

P. 626.956.4200 | F. 626.956.4225 | et2online.com